

SW44834

SPST Circuitry DVR Signal Switch

SPST switch with Bi-Color LED Illumination and Pigtail Wire Harness



ELECTRO-MECH
COMPONENTS



- ♦ Low profile button for anti-tampering
- ♦ Bi-Color Red / Green LED illumination
- ♦ Momentary action with SPST circuit
- ♦ Pigtail wire harness with Molex connector

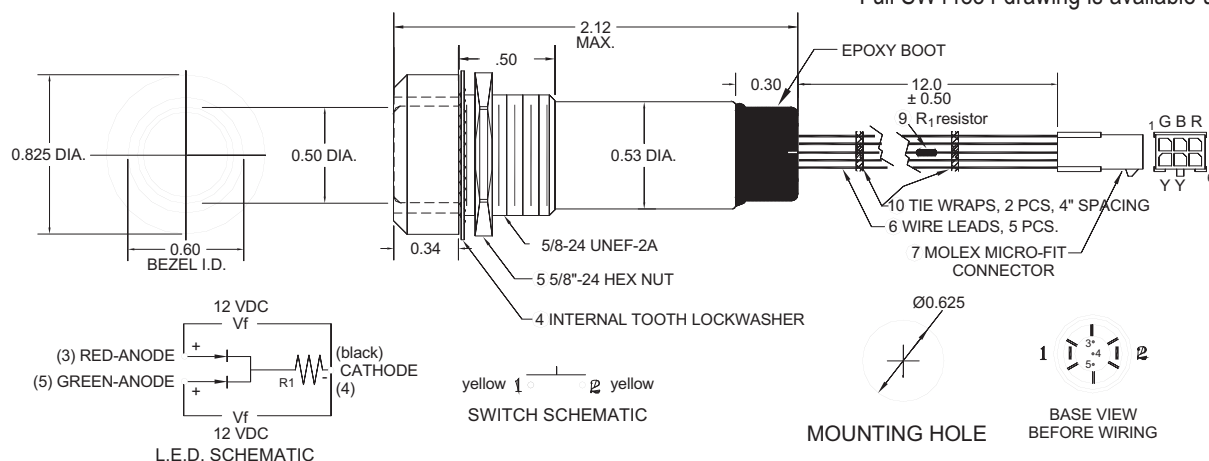
Specifications:

Ratings:	2A res., 0.5A ind. at 30 VDC
Operating Pressure:	20 oz. \pm 10 oz.
Weight:	0.5 oz. (14 g) (approx.)
Switch Action:	Momentary
Actuations:	100,000 min. at rated load.
Contacts:	Silver plated (Gold Plating also available).
Terminals:	Solder Lug (2) and LED Pins (3); sealed with epoxy boot and wire leads.
LED Illumination:	Includes bi-color Red / Green LED for status indication.

Electro-Mech has introduced its SW44834 switch assembly for DVR Signal Switching. End use application is for operator (bus driver) to actuate switch to time stamp an event on full time DVR safety video recording. During replay, operator can quickly locate event mark on playback to study video more closely. EMC switch features SPST circuitry, bi-color Red/Green illumination for status indication, and wire harness pigtail assembly terminating with a Molex Micro-Fit connector.

SW44834 (not to scale):

Full SW44834 drawing is available upon request.



electro-mech

www.electromechcomp.com

info@electromechcomp.com

1826 Floradale Avenue • South El Monte, CA 91733-3689 USA * (626) 442-7180 * (888) 442-7180 * Fax (626) 350-8070