

NOTES

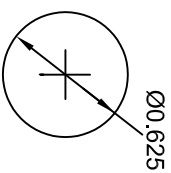
1. RATINGS: 30VDC OR 115VAC, 2 AMPS RESISTIVE, 0.5 AMP INDUCTIVE.
2. OPERATING PRESSURE: 12 OZ. ± 4 OZ.
3. TRAVEL: 0.090 APPROX.
4. ACTUATIONS: 100,000 MINIMUM.
5. CONTACTS: SILVER.
6. TERMINALS: WILL MATE WITH AMP 110 FASTON SERIES.
7. SWITCH TYPE: 22-128 ILLUMINATED SWITCH
8. SWITCH ACTION: MOMENTARY.
9. SWITCH CIRCUITRY: SPST, 1NO, PLUS LAMP/LED CIRCUIT.
10. LENS: SW44160-100. COLOR RED. 0.50" DIAMETER (SIMILAR TO AN L612R).
- 10A. LENS IS EPOXIED IN PLACE AND IS NOT REMOVEABLE.
11. LED: NON-REMOVEABLE LED. RED. STANLEY P/N BR5364X. NO BUILT IN RESISTOR. RECOMMENDED OPERATING VOLTAGE 2.0 VDC.

CUSTOMER: TRILOGY PLASTICS, SNELLVILLE, GA AND LOUISVILLE, OH



2 0 1

SCHEMATIC



MOUNTING HOLE

C	ELECTRO-MECH COMPONENTS INC.				DRAWN		TT	CHKD	SW44170
B	SOUTH EL MONTE, CA * 626/442-7180 * FAX 626/350-8070				SCALE		3:2	DATE	
A	FSCM: 07150		DIM. IN INCHES		FILE		SW44170	DATE	
LT	REVISIONS		DATE		TOL. UNLESS NOTED		XXX.015 .XXX.010	DATE	13AUG01

PUSHBUTTON SWITCH