



# Hall Effect Switch SW44158

## Features

- ◆ solid state circuitry
- ◆ SPST, NO, momentary
- ◆ 5/8" square button
- ◆ 3/4" square mounting hole
- ◆ LED or incandescent lamp illum.

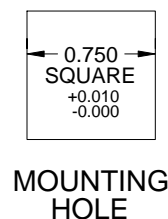
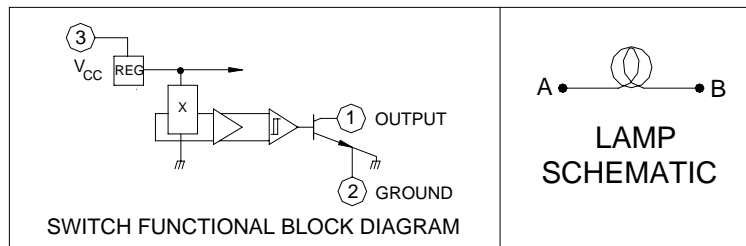
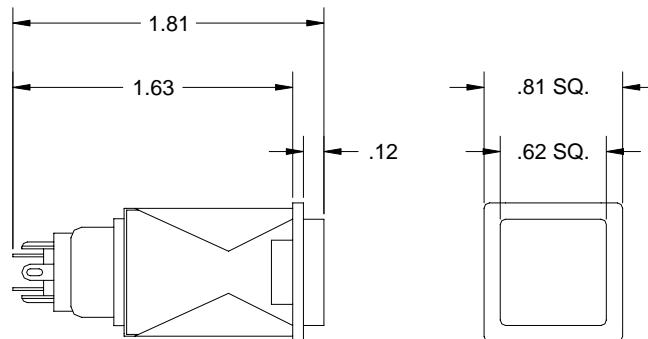
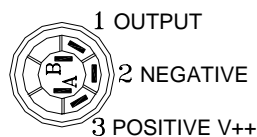
Electro-Mech introduces the SW44158 Hall Effect pushbutton switch. Featuring Hall-effect integrated circuitry, the SW44158 provides reliable performance and long service life in a compact size to meet a wide variety of small form factor requirements. Designed as a SPST or 2PST momentary illuminated switch, the SW44158 is suitable for virtually any high volume front panel switch application including industrial/ avionics displays and controls or instrument panel controls.



## Specifications:

Ratings:	3.8vdc min supply voltage; 5mA max supply current
Life (at rated load):	500,000 cycles minimum at rated load
Weight:	3 grams (approx.)
Operating Pressure:	12 oz. $\pm$ 4 oz.
Plunger Travel:	0.120" (nom.) (0.050 min. travel to make)
Switch Action:	momentary
Hardware Supplied:	snap in aluminum adapter
Terminals:	solder lug terminals
Pushbutton Lens:	5/8" square, any color
Lamp/LED:	accommodates one T 1-3/4 mfb lamp or LED
Ordering info:	order as drawing SW44158

## Specifications (not to scale) (Drawing SW44158):



**Electro-Mech Components, Inc.** ♦ 888/442-7180 ♦ 626/442-7180 ♦ Fax 626/350-8070  
 1826 Floradale Avenue ♦ South El Monte, CA 91733-3689 USA ♦ Email: info@electromechcomp.com  
 Web: www.electromechcomp.com