

Series 5300

Front Panel Mount, SPST-2PDT Momentary Pushbutton Switch Illuminated and Non-Illuminated Models



ELECTRO-MECH
COMPONENTS

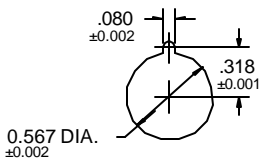
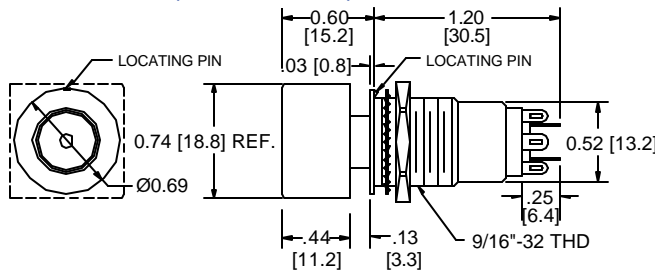


- * Short housing design requires <1.25" behind the panel
- * Momentary switching
- * High density, 3/4" centers mounting available
- * Light operating pressure
- * Accommodates all EMC standard lenses

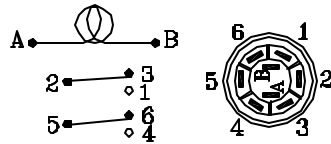
Electro-Mech is offering a miniature lighted or non-lighted pushbutton switch to be used in all types of keyboard matrix assemblies. These small switches feature momentary switching in a compact, 1.25" behind the panel housing. With an extra light touch of just 8 oz., these miniature switches are ideal for any type of keyboard. High density mounting is also capable side-by-side on 3/4" centers with an optional round slotted nut.

Positive action, reliable circuitry, and proven low-bounce characteristics are offered in this fully enclosed aluminum housing design, ideal for tight packaging requirements and keyboard assemblies. They also utilize Electro-Mech's unique design concept of silver slide bar action which makes it possible for them to handle low amperage switching, for a half million actuations minimum life. Gold plated contacts can be supplied for dry circuit applications.

Series 5300 (not to scale):



RECOMMENDED MOUNTING HOLE



SCHEMATIC

Specifications:

Ratings:	30 volts DC or 125 volts AC; 2.0A resistive, 0.5A inductive
Weight:	0.8 oz. (23 g) (approx.)
Operating Pressure:	12 oz. ± 4 oz. (341g ± 114g)
Plunger Travel:	0.100 nominal (2.54mm)
Actuations:	500,000 minimum
Contacts:	Silver plated (gold plating optional)
Terminals:	Standard EMC solder lug. Accepts two 20 AWG wires. PC pin terminals also available.
Lens:	Accommodates any standard EMC lens. See Single Lamp Lenses.
Lamp or LED:	Accommodates one T 1-3/4 (5mm) midget flange base lamp or LED. Lamp circuit is independent.

High Density Panel Mounting: Series 5300 switches may be mounted on 3/4" centers by specifying an AF modification code (round slotted nut). Ordering example: 5350AF.

Printed Circuit Board Terminals: Applications requiring direct mounting to a PC board may be specified with modification code PC for PC pins (custom EMC pin-out). Ordering example: 5328PC.

Part Number Table:

	— SPST —		— 2PST —				
	1N.O.	1N.C.	2N.O.	2N.C.	1N.C.	1PDT	2PDT
Illuminated	5328	5329	5330	5331	5332	5349	5350
Non-Illuminated	5428	5429	5430	5431	5432	5449	5450

5300 02/2003

electro-mech



www.electromechcomp.com

info@electromechcomp.com

1826 Floradale Avenue • South El Monte, CA 91733-3689 USA * (626) 442-7180 * (888) 442-7180 * Fax (626) 350-8070

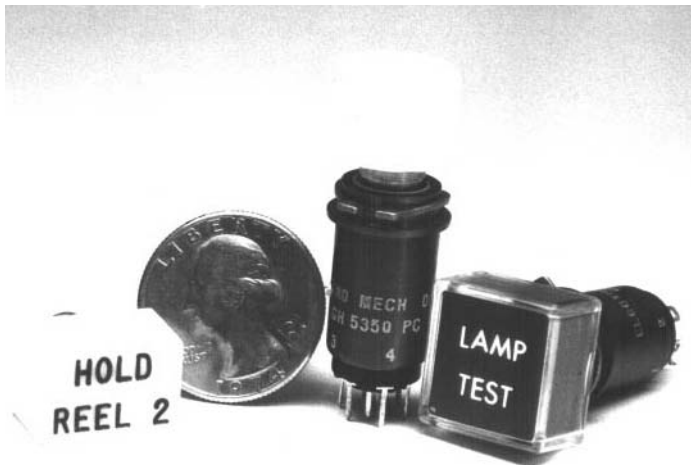
Series GH5300

Sub Panel Mount, SPST-2PDT Momentary Pushbutton Switch

Illuminated and Non-Illuminated Models



ELECTRO-MECH
COMPONENTS



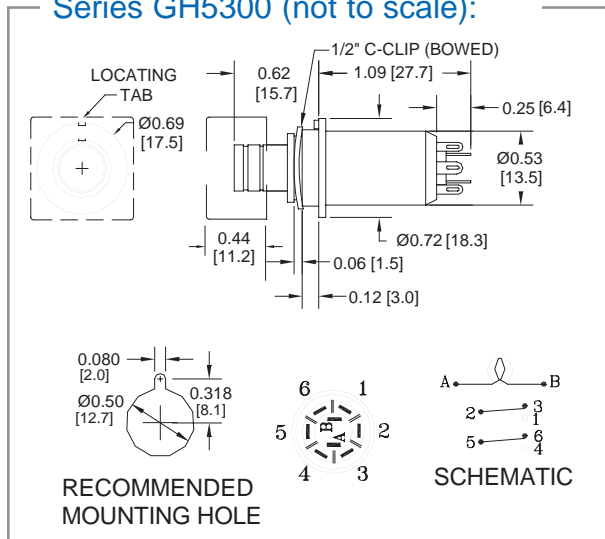
Features

- * Momentary switching
- * High density, 5/8" centers mounting available
- * Light operating pressure
- * Accommodates all EMC standard lenses
- * 500,000 actuations minimum at 0.5A resistive

Electro-Mech Series GH5300 lighted pushbutton switch provides momentary switching in a compact sub-panel mount design, eliminating threaded type hardware which enables switch mounting on 5/8" [15.9mm] centers. These small switches mount through a 1/16" [1.6mm] thick panel and are secured in place by a retaining ring (c-clip) (supplied). Custom matrix designs and gang assemblies are readily fabricated to meet customer needs.

The Series GH5300 has all of the features offered in the Series 5300, including positive action, reliable circuitry, and proven low-bounce characteristics in a fully enclosed aluminum housing design. This switch also utilizes Electro-Mech's unique design concept of silver slide bar action which makes it possible for them to handle low amperage switching, for half million actuations without failure. Gold plating can be specified for dry circuit applications.

Series GH5300 (not to scale):



Specifications:

Ratings:	30 volts DC or 125 volts AC; 2.0A resistive, 0.5A inductive
Weight:	0.8 oz. (23 g) (approx.)
Operating Pressure:	12 oz.+ 4 oz. (341g ± 114g)
Plunger Travel:	0.100 nominal (2.54mm)
Actuations:	500,000 minimum
Contacts:	Silver plated (gold plating optional)
Terminals:	Standard EMC solder lug. Accepts two 20 AWG wires. PC pin terminals also available.
Lens:	Accommodates any standard EMC lens. See Single Lamp Lenses.
Lamp or LED:	Accommodates one T 1-3/4 (5mm) midget flange base lamp or LED. Lamp circuit is independent.

Gold Plated Contacts: Series GH5300 switches may be specified with gold plated contacts for dry switching applications (typically less than 100mA). Specify "GP" code. Ordering example: GH5350GP

Printed Circuit Board Terminals: Applications requiring direct mounting to a PC board may be specified with modification code PC for PC pins (custom EMC pin-out). Ordering example: GH5328PC.

Part Number Table:

	SPST		2PST			
	1N.O.	1N.C.	2N.O.	2N.C.	1N.C.	1PDT 2PDT
Illuminated	GH5328	GH5329	GH5330	GH5331	GH5332	GH5349 GH5350
Non-Illuminated	GH5428	GH5429	GH5430	GH5431	GH5432	GH5449 GH5450

GH5300 12/2003

electro-mech



www.electromechcomp.com

info@electromechcomp.com

1826 Floradale Avenue • South El Monte, CA 91733-3689 USA * (626) 442-7180 * (888) 442-7180 * Fax (626) 350-8070