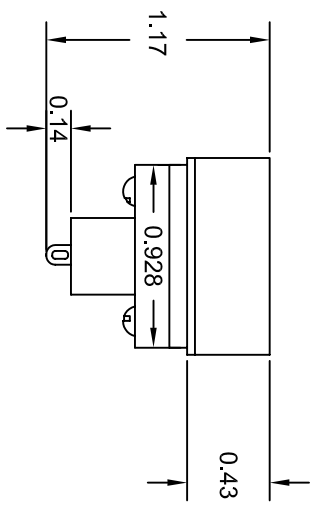
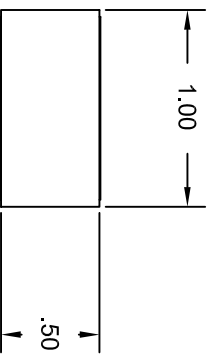
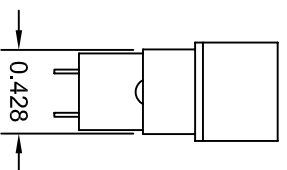
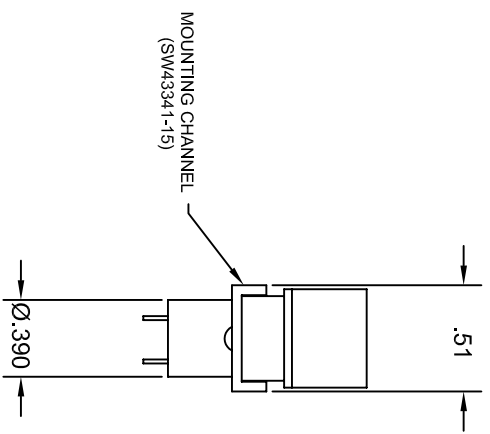


VIEW WITH MOUNTING BRACKET

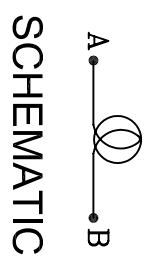
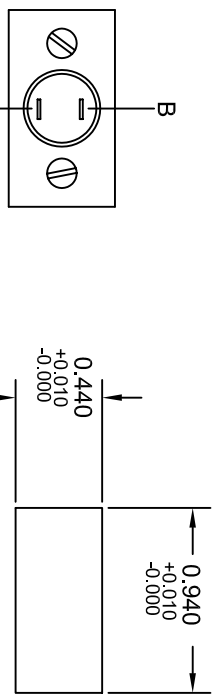
VIEW WITHOUT MOUNTING BRACKET



NOTES

1. LENS FINISH: LUSTERLESS BLACK.
D6038, 12VDC, 60mA
OR D382, 14VDC, 80mA, ONE PIECE SUPPLIED.
 2. LAMP: D6038, 12VDC, 60mA
OR D382, 14VDC, 80mA, ONE PIECE SUPPLIED.
 3. INDICATOR TO BE MARKED SW43341-XXX WHERE XXX=LENS DASH NUMBER.
 4. LENS TO BE MARKED WITH LENS DASH NUMBER ONLY 3 DIGITS.
PLACE MARKING ON BOTTOM SURFACE (NOT VISIBLE WHEN ASSEMBLED).
 5. SEE SW43341 LENS DETAIL LISTING WORKSHEET FOR LENS LEGENDS.
- CUSTOMER: ECC INTERNATIONAL CORP., ORLANDO, FL
CUSTOMER: AAI ESI, SOMERVILLE, SC

MOUNTING HOLE



F	ADD TOL'S TO MTG HOLE. ADD DIMS 0.428 AND 0.928.	17AUG99 TT
E	1.17 WAS 1.15. 0.43 WAS 0.42. CHG NOTE 2: ADD "OR D382" ADD NOTE 5	23JUL99 TT 30APR99 TT
C	CHANGE NOTE 3.4	3/4/91 JF
B	ADD NOTES 3.4 CHG.NOTE 2. .51 BRACKET WAS .54	3/1/91 JF
A	REDESIGN	1/22/91 JF
LT	REVISIONS	DATE

ELECTRO-MECH COMPONENTS INC.		INDICATOR ASSEMBLY	
SO. EL MONTE, CA * 626/442-7180 * FAX 626/350-8070			
FSCM: 07150	DIM. IN INCHES	SCALE FULL	DRAWN JF
TOL. UNLESS NOTED	.XXX .010	FILE SW43341	DATE 8/24/90
			CHK'D
			SW43341