



hall effect switch+potentiometer

Features

- ◆ compact combination switch
- ◆ SPST, NO, hall effect IC switch
- ◆ <1" behind panel depth
- ◆ 100K potentiometer value
- ◆ 1/2" square body size
- ◆ front facing PC pins

Electro-Mech Announces Its Compact Potentiometer Switch

The hall-effect switch + potentiometer switch offers the advantages of both digital and rotary control in a compact size for audio volume preset in avionics cockpit applications. Illumination of the edgelit knob is via an edgelit panel. Front facing PC pins allow unit to be mounted from behind the panel.

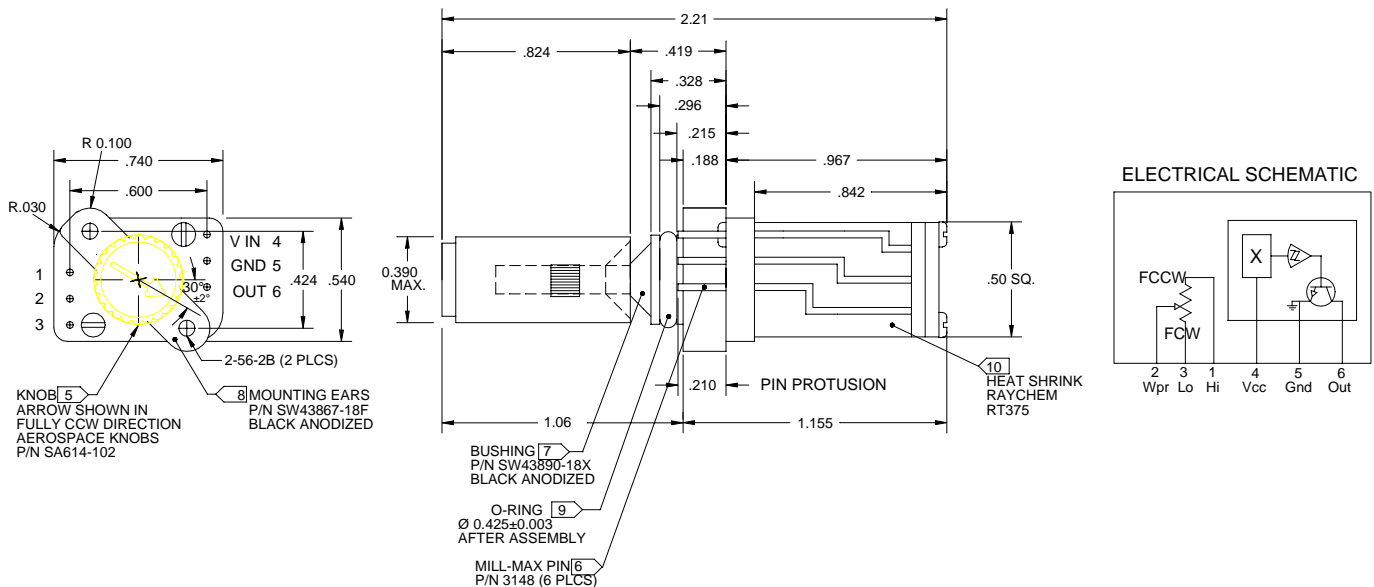


Specifications (drawing SW43890-4 REV A):

- Weight: 1.0 ounce maximum
- Operating Temperature: -40°C to +95°C
- Operating Pressure: 35 ± 5 ounces
- Switch Travel: 0.060 nominal
- Actuations: 100,000 minimum
- Switch Action: snap-feel momentary
- Potentiometer: 100K linear (S) taper (can be specified)
- Mechanical Rotation: 295°

IC supply voltage: 3.8vdc minimum
 IC supply current: 5mA maximum
Note: Edgelit knob is supplied with this assembly.

Specifications (drawing SW43890 REV A) (not to scale):



Electro-Mech Components, Inc. ♦ 888/442-7180 ♦ 626/442-7180 ♦ Fax 626/350-8070
 1826 Floradale Avenue ♦ South El Monte, CA 91733-3689 USA ♦ Email Info@electromechcomp.com
 web: www.electromechcomp.com